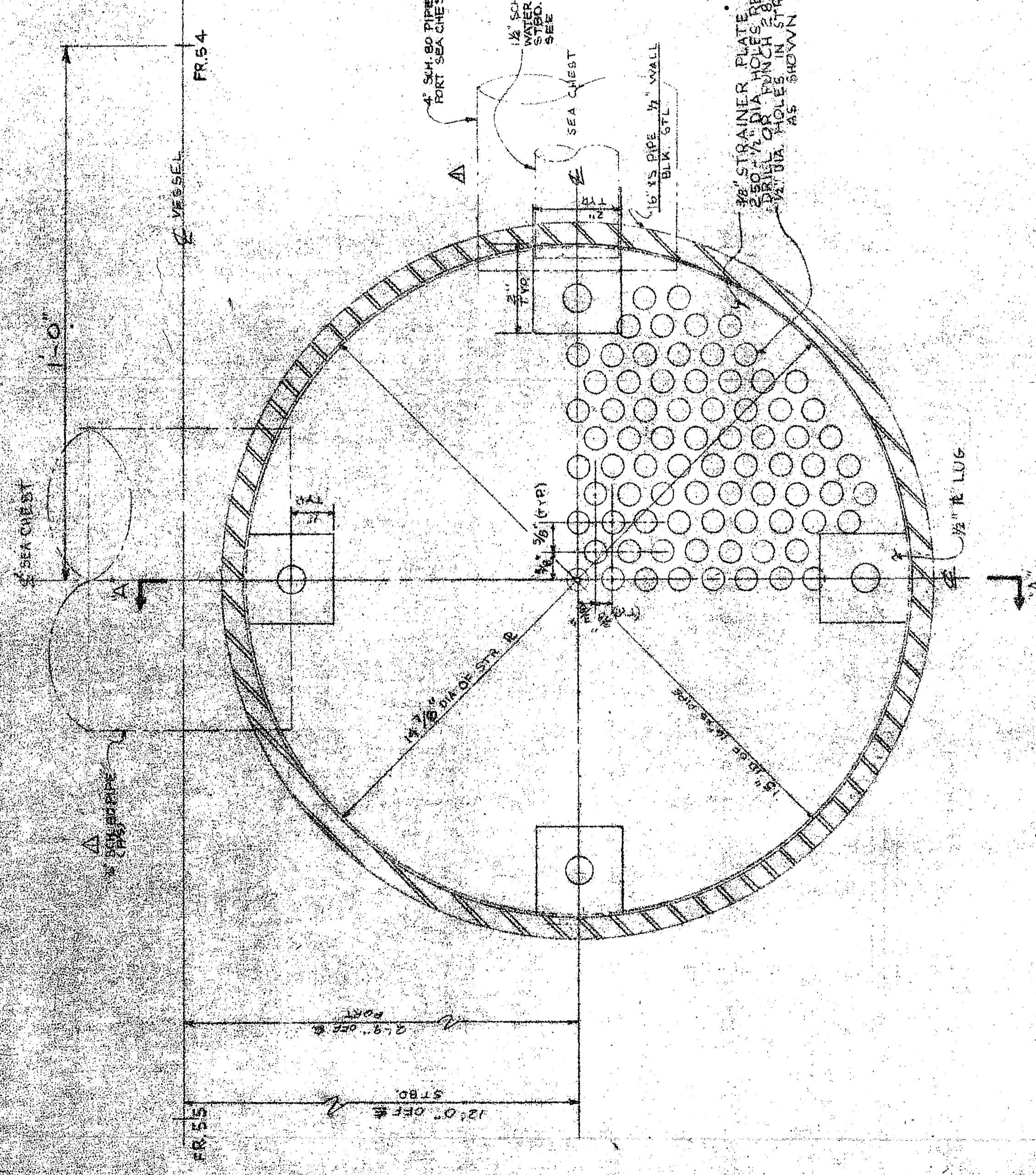
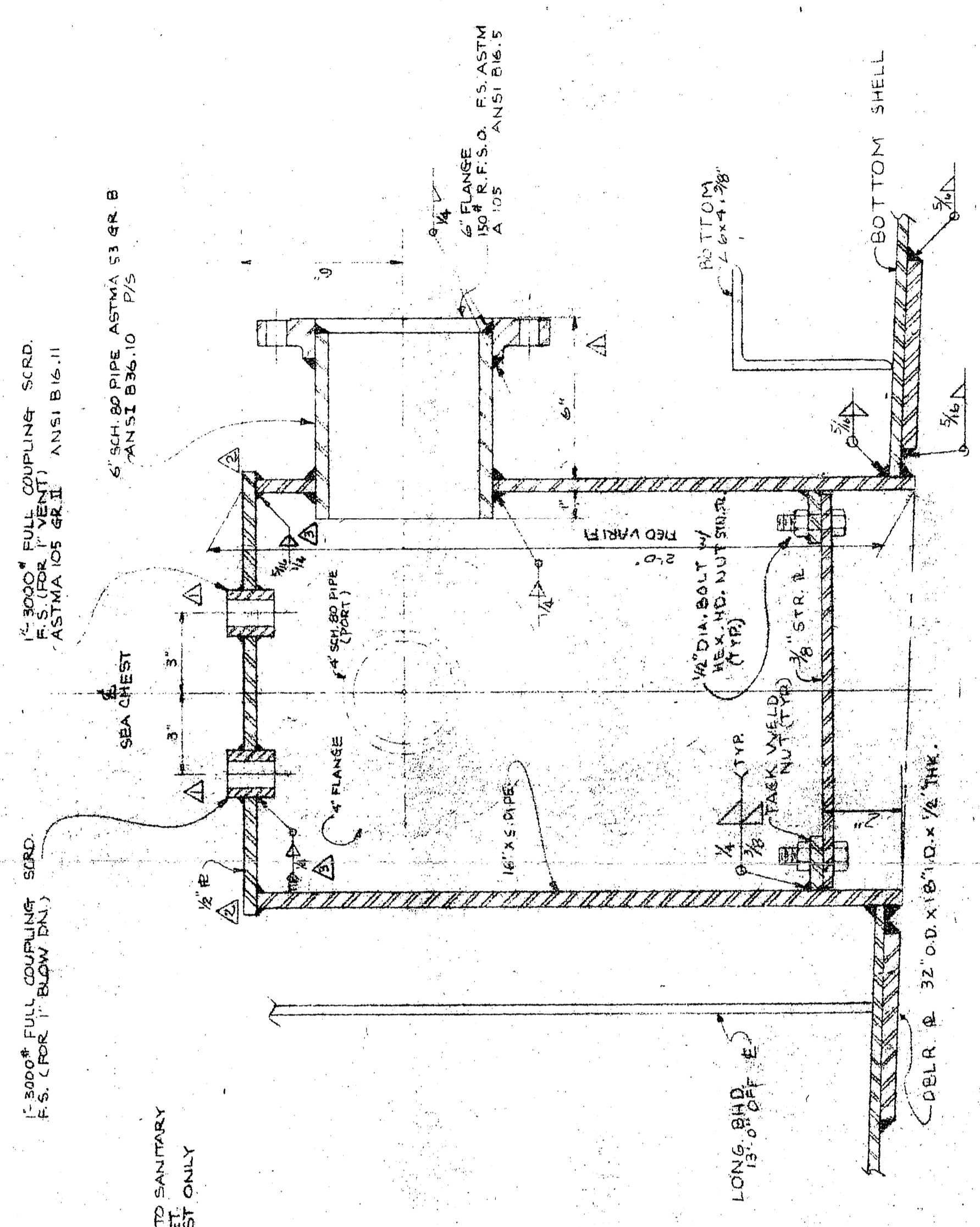


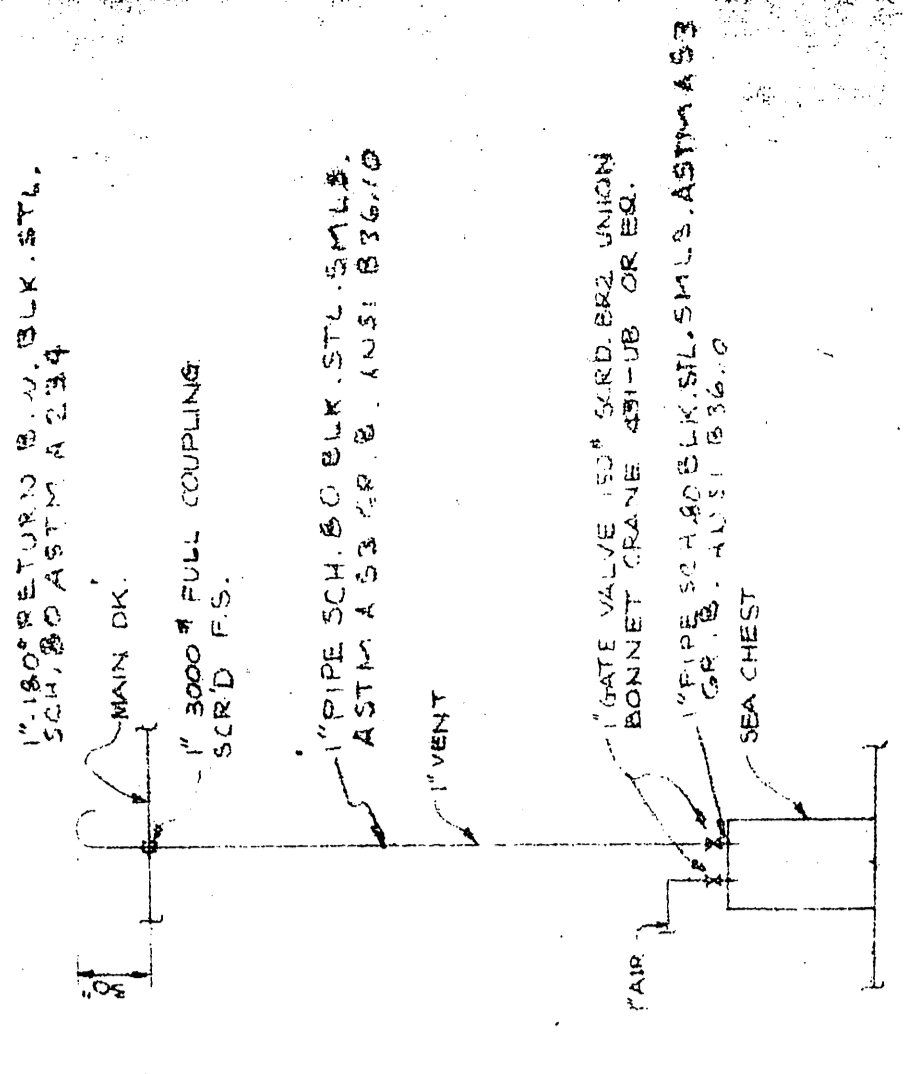
NO.	DESCRIPTION	DATE
1	DESIGNER HAS REVIEWED ALL COMMENTS FROM THE VESSEL MARINE ENGINEERS AND HAS MADE THE NECESSARY CHANGES TO THE DRAWING. ALL COMMENTS HAVE BEEN MARKED UP IN RED.	11/17/18
2	REVISED DRAWING FOR CONSTRUCTION. ALL COMMENTS HAVE BEEN MARKED UP IN RED.	11/17/18
3	REVISED DRAWING FOR CONSTRUCTION. ALL COMMENTS HAVE BEEN MARKED UP IN RED.	11/17/18



DETAIL 'A'
SEA CHEST STR. PLATE
2 RECD. 1 STD & 1 PORT
SCALE: HALF SIZE



SECTION 'A-A'
SCALE: 3/4" = 1'-0"
LKG. AREAS SHOWN
FOR BUILT-UP PLATE



VENT & AIR BLOW DN. PIPES
FOR SEA CHEST
SCALE: 3/4" = 1'-0"

NOTES:
1. FRANGES SHALL BE MAINTAINED AFTER FABRICATION
2. PROVIDE 2(TWO) ANCHORS IN EACH SEA CHEST

MISSISSIPPI MARINE TOWBOAT CORP. HULL #90

DESIGN ASSOCIATES, INC.
NAVAL ARCHITECTS - NEW ORLEANS, LA. MARINE ENGINEERS

TIDEWATER MARINE SERVICE

14'-3"-0" x 36'-0" x 10'-0" SEISMIC VESSEL

SEA CHEST DET.

Drawn: BERT KUCIUK	Date: 4-22-18	Checked: P.C.B.
Traced: _____	Date: _____	Checked: _____
App'd: _____	Date: _____	Scale: AS SHOWN
Sheet: 01	Drawing No. DS-043-34	Revision: _____